

UL file no. R 39859 panels for use in windstorm-rated assemblies (ZHLL) (ZHLA) and Florida building code testing application

Standard (S/TAS)

Models:

WP 60 – 240, FP-P 80 – 200 panels with PUR-PIR foamed insulation core, both sides with steel-sheet surfaces
 WP-F 60 – 240, FP-F 60 – 240 panels with mineralwool insulation core, both sides with steel-sheet surfaces

Head Office/Production Plant:
 BRUCHA Gesellschaft m.b.H
 A-3451 Michelhausen · Rusterstraße 33
 tel.: +43 2275 58 75 · fax-DW: 1804
 office@brucha.at

Branch US:
BRUCHA Corp.
 1776 S Jackson Street, Suite 603
 Denver, CO 80210
 tel.: +1 (866) BRUCHA1
 fax: +1 (866) 278-2421
 infousa@brucha.at

Additional installation details:

point 1

check of dimensions and quantity of received panels ref. to the order

point 2

mounting instructions available – www.brucha.com / **download**

point 3

checking the presence of necessary joint – gaskets (thickness 5 mm) in the panel groove – spring connection

point 4

control of quantity and type of fixing material – recording to static requirements – for installation of Brucha panels on the corresponding substructure (wood or steel etc.)

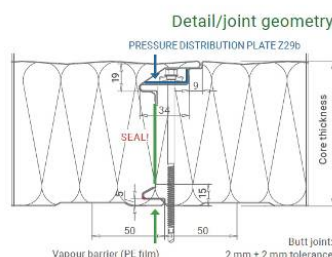
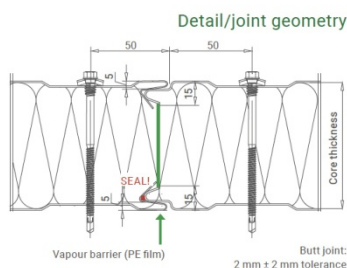
point 5

manufacture of seamless panel-connections with suitable seals and edge flashing-profiles, made of steel – sheet - to the adjacent components for having the required air tightness and no water penetration in the component - connection areas

point 6

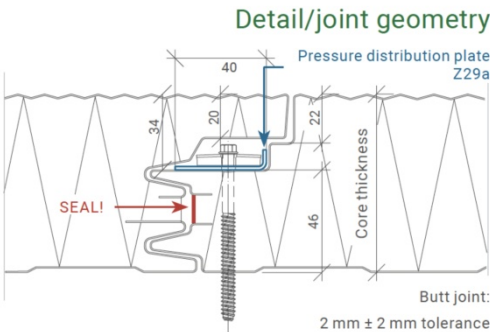
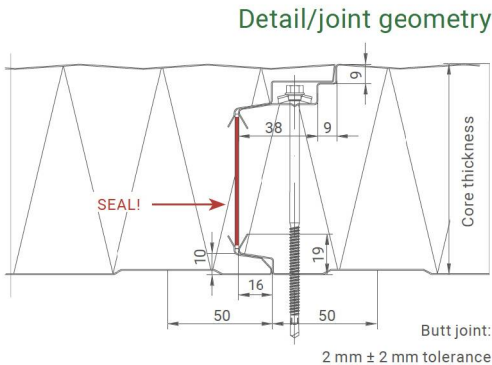
panel joint **WP-F**

FP-F



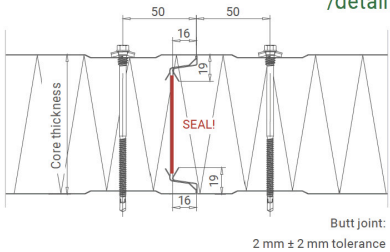
BRUCHAPanel panel FP

FP-P



BRUCHAPanel panel WP

Joint geometry up to 80 mm core thickness /detail



Joint geometry from 100 mm core thickness /detail

